

Guggenheim Helsinki Design Competition

GH-2135699332

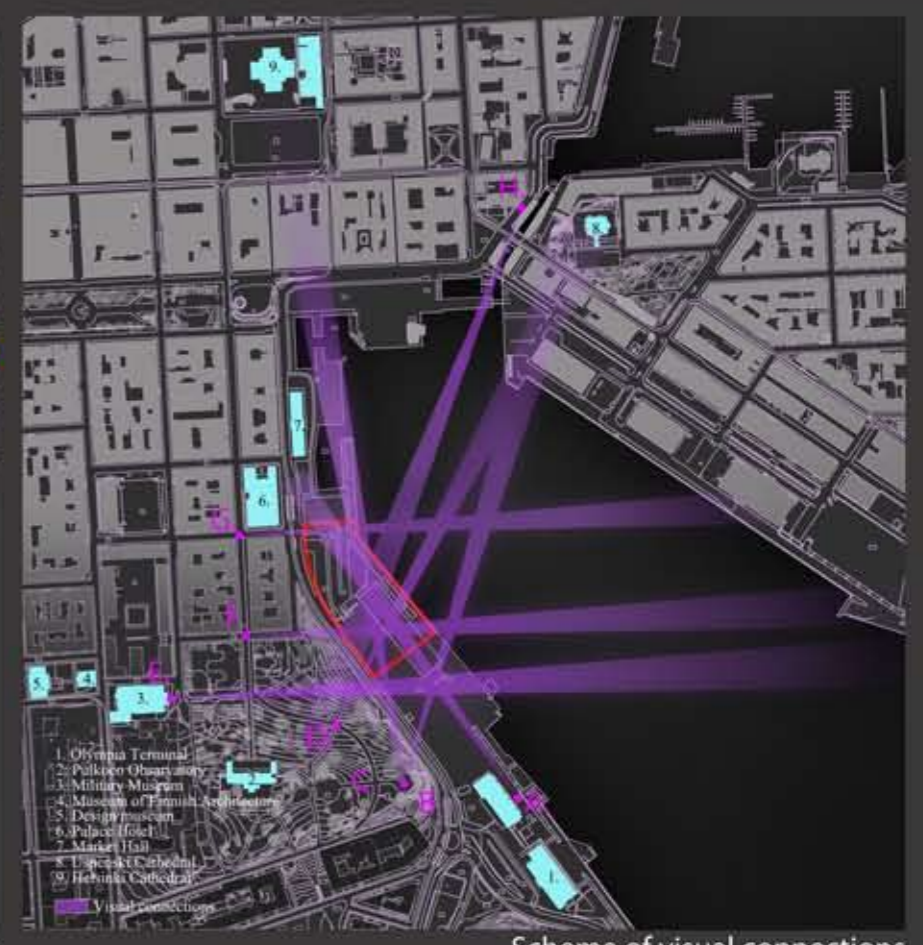
Cityscape



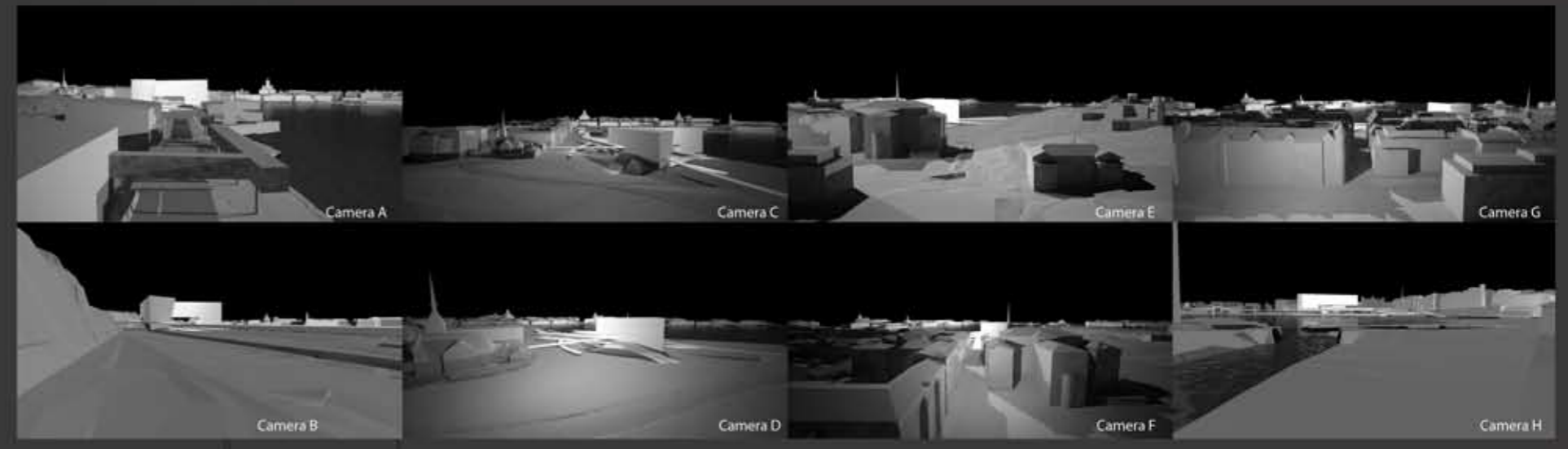
Pedestrian and bicycle traffic scheme



Transport traffic scheme



Scheme of visual connections



City Facade 1:1000



Marine Facade 1:1000

Guggenheim Helsinki Design Competition

GH-2135699332

Concept Design



LEVEL +10.700

LEVEL +6.700

LEVEL +1.900

LEVEL -1.200

107680 107680 107680 107680

107680 107680 107680 107680

107680 107680 107680 107680

107680 107680 107680 107680

107680 107680 107680 107680

107680 107680 107680 107680

107680 107680 107680 107680

107680 107680 107680 107680

107680 107680 107680 107680

107680 107680 107680 107680

107680 107680 107680 107680

107680 107680 107680 107680

107680 107680 107680 107680

107680 107680 107680 107680

107680 107680 107680 107680

107680 107680 107680 107680

107680 107680 107680 107680

107680 107680 107680 107680

107680 107680 107680 107680

107680 107680 107680 107680

107680 107680 107680 107680

107680 107680 107680 107680

107680 107680 107680 107680

107680 107680 107680 107680

107680 107680 107680 107680

107680 107680 107680 107680

107680 107680 107680 107680

107680 107680 107680 107680

107680 107680 107680 107680

107680 107680 107680 107680

107680 107680 107680 107680

107680 107680 107680 107680

107680 107680 107680 107680

107680 107680 107680 107680

107680 107680 107680 107680

107680 107680 107680 107680

107680 107680 107680 107680

107680 107680 107680 107680

107680 107680 107680 107680

LEVEL +34.700

1. Exhibition, 1029

2. Hall, 890

LEVEL +28.700

1. Exhibition, 1029

2. Central Room/Projection Booth

3. Simultaneous Translation Booth

4. Hall, 467

LEVEL +22.700

1. Exhibition, 1029

2. Flexible Performance/Conference Hall, 547

3. Movable Stage Platform, 83

4. Seating, Stage, and Equipment Storage, 26

5. Technical Office, 29

6. Dressing Rooms, 19

7. Multifunction Classroom/Laboratory, 80

8. Hall, 167

VISITOR SERVICES

1. Visitor Screening/Bag Check, 74

2. Coat Check/Lockers, 37

3. Storage, 33

4. Ticketing and Information Desk, 42

5. WC, 60

6. Hall, 185

DINING

1. Cafe/Bar, 277

2. Formal Restaurant, 316

3. Kitchen, 272

4. Catering Prep/Staging Area, 30

5. Receiving, 35

6. Offices, 113

7. Trash Room, 42

8. Storage, 20

MAINTENANCE AND OPERATION

9. Security office/control room, 36

10. Custodial office, 45

11. IT service, workroom and staff office, 41

12. Supply, equipment and seasonal furniture storage, 31

13. Landscape and grounds maintenance equipment, 40

14. Staff lunch room/lounge, 242

15. Locked room, 39

16. Retail, 120

17. Parking for bicycles, 453

18. Parking for bicycles, 484

19. WC, 60

20. WC, 73

21. WC, 26

22. WC, 70

OFFICES

23. Administrative Offices, 127

24. Curatorial, Exhibition Design, Publications, Archivist Offices, 107

25. Education Offices, 82

26. Marketing and Development Offices, 73

27. Conference Rooms, 109

28. Shared Work Room/Copy Room/File Storage

29. Staff entrance, 126

COLLECTION AND STORAGE MANAGEMENT

1. Art Storage, 81

2. Shipping/Receiving, 34

3. Crate Storage, 65

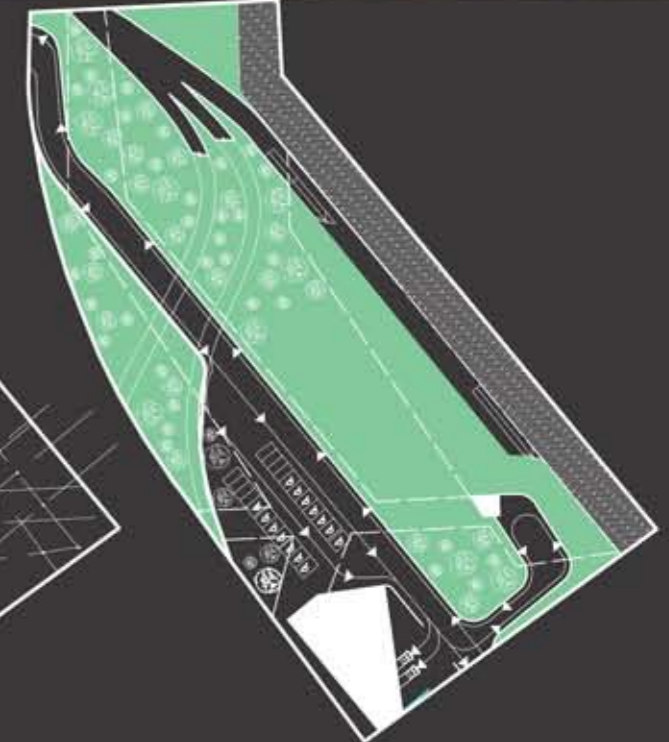
4. Unpacking/Staging, 67

5. Shared Art Phys/Conservation Studio and Equipment Storage, 96

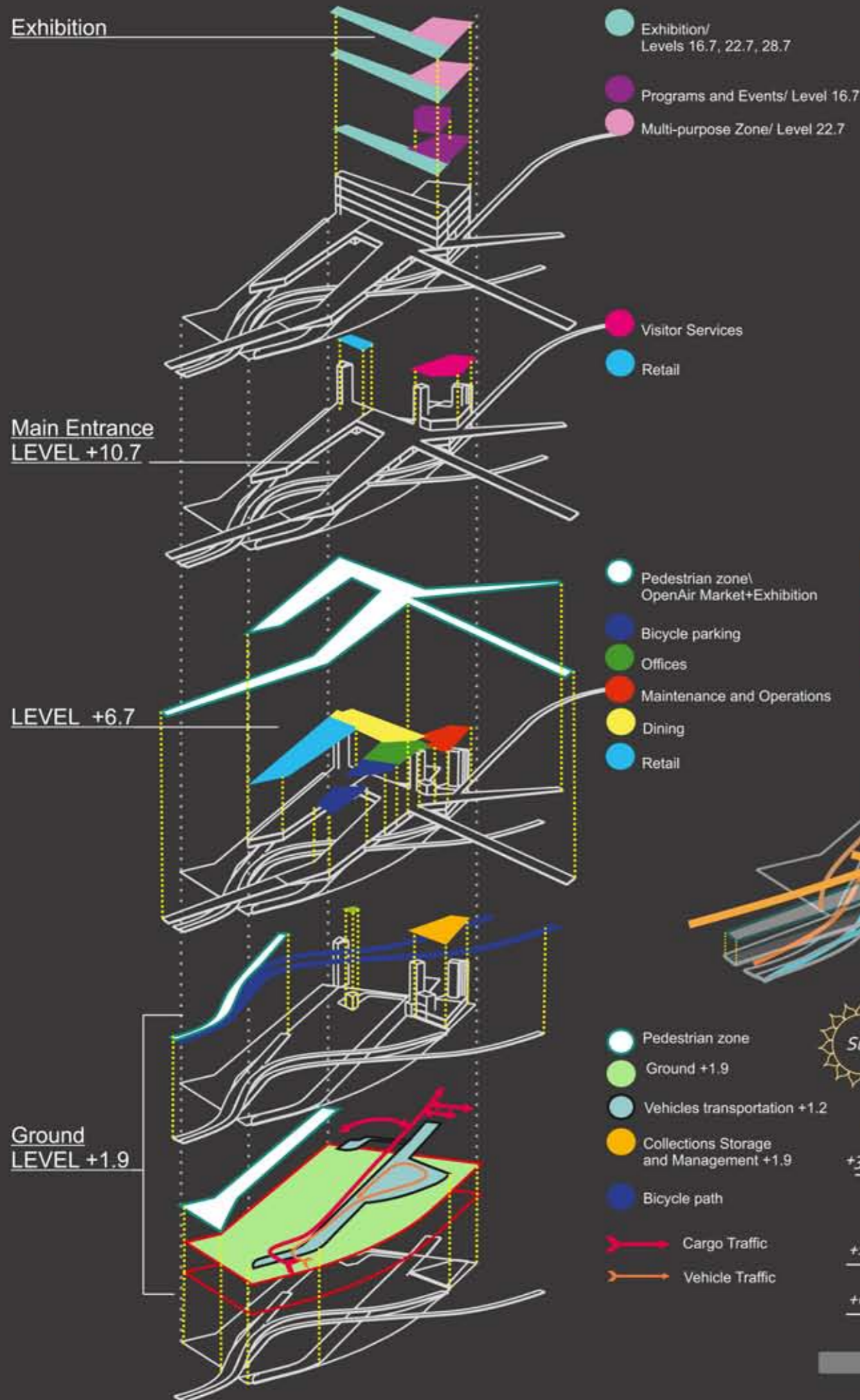
6. Registrar, Conservation, Exhib. Design & Tech Offices, 27

7. WC, 36

8. Technical room, 43



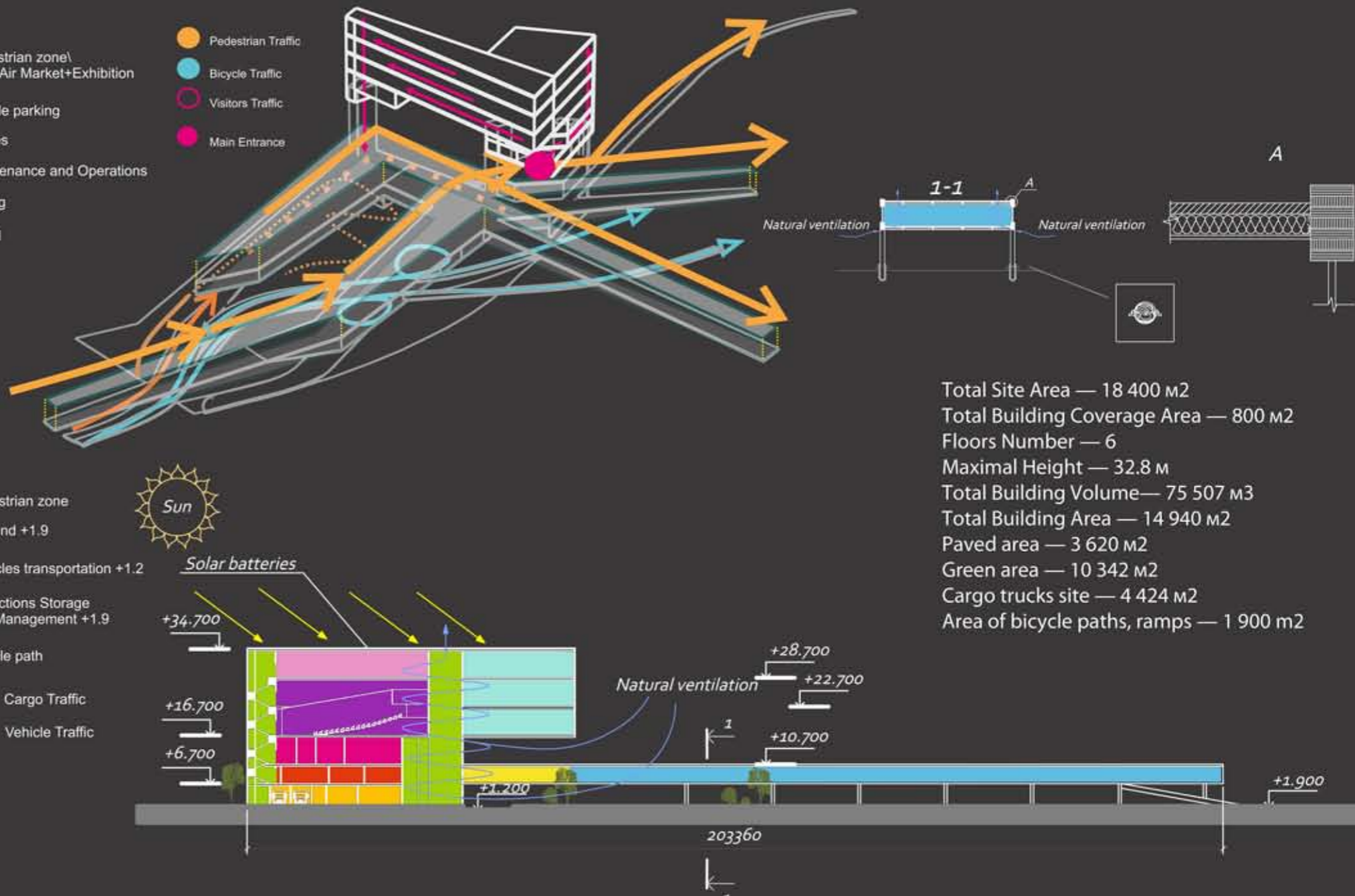




Aspects of ecology

Ecology of Museum architecture defined by feature location of the site area (South Port), natural terrain, (Tahtitornivouri puisto b Kaivopuisto), climate conditions.

- Minimization of visual damage to urban development - the museum preserves views of the water from the streets Bernhardinkatu, Eteläisen Makasiinikatu and Etelärinkata panorama;
- Optimization the use of natural light causes applying of glass with different coatings in façade systems, including the so-called "smart glass".
- Using of high humidity and precipitation for the air-conditioning system and natural ventilation in building.
- Active use of mirror systems for reflected light inside and outside the museum. To the north (to the Kauppatori square oriented main facade of the museum, which is a huge showcase with an exhibition area to give a stable temperature and light regime.
- One of the highlights of the environmental policy is the use of wooden structures. For example, the floors and the construction of Art Plaza(OpenAir Market) are made of laminated wood beams span associated paneled spatial plate. The advantages of this solution are obvious - it is not only eco-friendly material, construction of such material does not emit CO2, are the local material used by local industries.
- Asphalted project site is expected to convert into a zone of green space area of 10340 m2
- The use of solar panels installed on the roof of the building will reduce the consumption load.



- Total Site Area — 18 400 m2
- Total Building Coverage Area — 800 m2
- Floors Number — 6
- Maximal Height — 32.8 m
- Total Building Volume — 75 507 m3
- Total Building Area — 14 940 m2
- Paved area — 3 620 m2
- Green area — 10 342 m2
- Cargo trucks site — 4 424 m2
- Area of bicycle paths, ramps — 1 900 m2