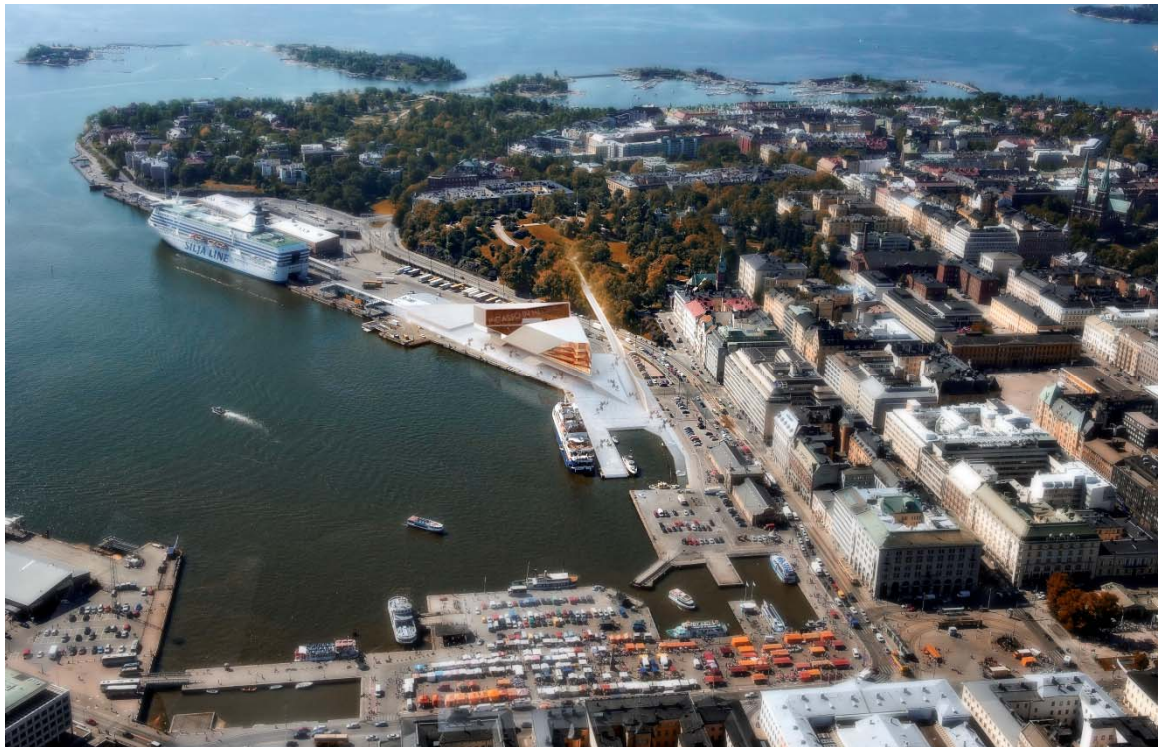


Press Summary for entry **GH-5958414652**





### ART\_XYLOPHILE \*

The extent of the space of nature is tested by the mobility of the subject on the surface of the earth. Within this horizontal movement, the vertical index (the stem) is perceived in relation to all other similar signs in parallax view to indicate speed and depth, while the horizon remains relatively unaltered in the discontinuous breadth of movement in the vertical. When transferred to the architectural space, the horizontal and vertical motion can fuse into one another and perception of time and space can be facilitated by the use of a three dimensional grid. While in motion, an incomplete grid refers to a hesitant sensation of one's place on earth. This is also what contemporary art evokes, with its open-ended manifestations, forms and materials. **Art\_Xylophile** aims at a consolidation of ordered, brittle crystalline forms with those of the soft and flexible pattern that the tree represents, and in due process alters both to create a hybrid envelope.

\* **Xylophile** : Insects or fungi that live, thrive, or grow in or on wood.